

ROMANIA

Romania is a country located at the intersection of Central and Southeastern Europe, bordering on the Black Sea. Romania shares a border with Hungary and Serbia to the west, Ukraine and Moldova to the northeast and east, and Bulgaria to the south.

At 238,400 square kilometers (92,000 sq mi), Romania is the ninth largest country of the European Union by area, and has the seventh largest population of the European Union with over 19 million people.

Its capital and largest city is Bucharest, the tenth largest city in the EU, with a population of around two million.



CONSTANTA



Harbour city with many touristic attractions



SCHOOL VICEAMIRAL IOAN MURGESCU



The School is located
in Valu lui Traian
(approximately 15
km from Constanta)

The School's park



Aspects of educational-recreational activities of students





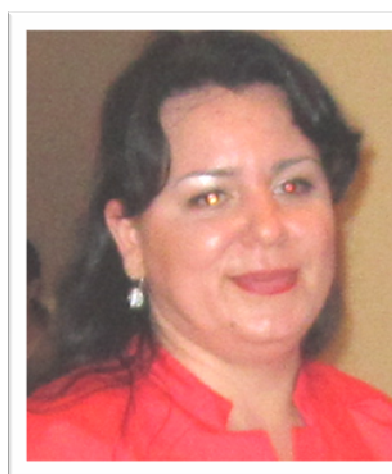




Headmaster
Prof. Preda Elena

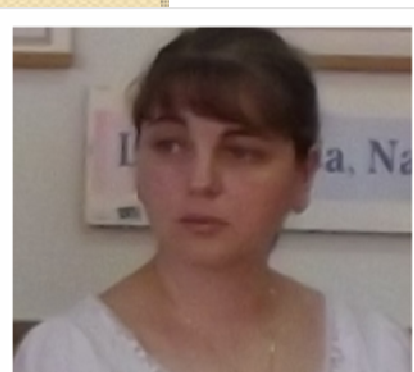


Project coordinator
Prof. Petrosan Daniela

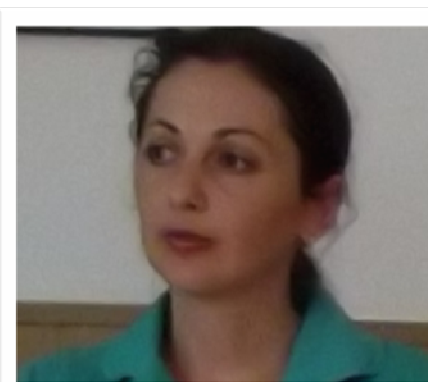


Prof. Munteanu
Niculina

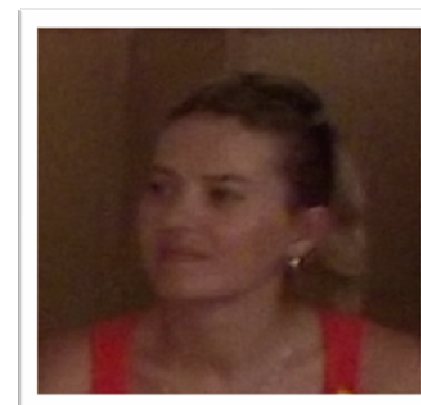
Learning English Through Drama, Songs and Game Activities
The project's team



Prof. Oncioiu Mihaela



Prof. Zamfirescu
Laura



Prof. Balica Madalina